



## 451B North Circular Road

, Neasden, NW2 7QD

**£1,900**

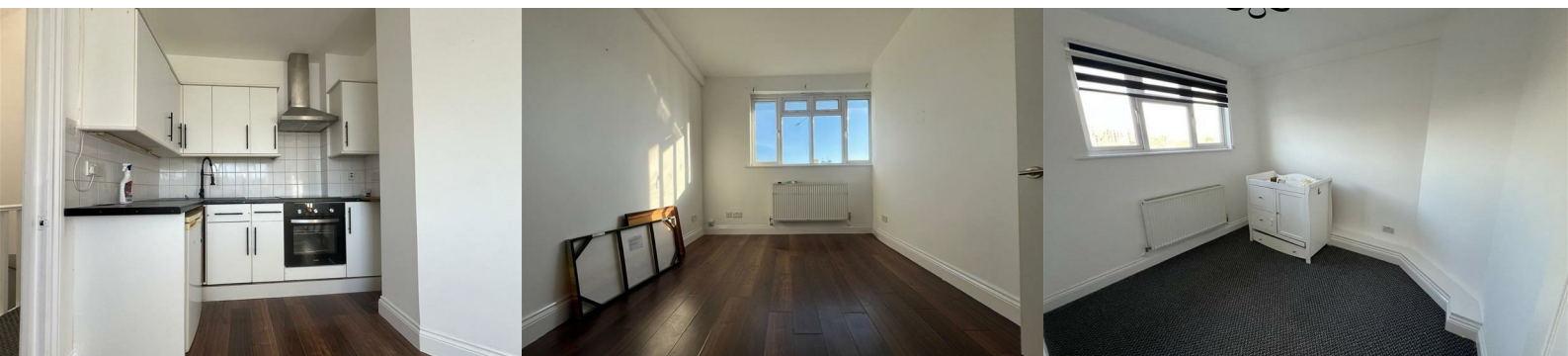


Nestled along the vibrant North Circular Road in Neasden, this newly refurbished two-bedroom flat offers a delightful blend of modern living and convenience. Spanning an impressive 517 square feet, the property boasts a well-designed layout that maximises space and light.

Upon entering, you are welcomed into a charming reception room, perfect for relaxation or entertaining guests. The flat features two comfortable bedrooms, providing ample space for rest and personalisation. The bathroom has been thoughtfully updated, ensuring a fresh and contemporary feel.

The location is particularly advantageous, with excellent transport links and local amenities just a stone's throw away. Residents will appreciate the ease of access to nearby shops, parks, and schools, making it an ideal choice for both families and professionals alike.

This flat is not just a home; it is a lifestyle choice, offering a perfect balance of comfort and accessibility in a bustling area. Whether you are looking to invest or seeking a new place to call home, this property is a must-see. Don't miss the opportunity to make this charming flat your own.



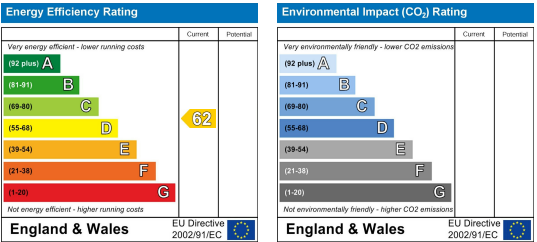
Area Map



Floor Plans



Energy Efficiency Graph



These particulars, whilst believed to be accurate are set out as a general outline only for guidance and do not constitute any part of an offer or contract. Intending purchasers should not rely on them as statements of representation of fact, but must satisfy themselves by inspection or otherwise as to their accuracy. No person in this firms employment has the authority to make or give any representation or warranty in respect of the property.

Unit 8, Edge Business Centre Humber Road, London, England, NW2 6EW  
Tel: 02071019393 Email: leo@yecestates.co.uk